

montorno

painting, drawing, sculpting, eating in Tuscany...

Join us in 2010 for two glorious weeks of painting, drawing, and sculpting instruction provided by the members of our accomplished teaching staff. And experience the best of Italian cuisine, freshly prepared just for you on your class days! All levels of experience are welcome. Opportunities abound for working with the figure, landscape, and still life at our Montorno studio, located adjacent to an ancient vintner's home on the mountainside above the village of Seravezza, Italy.

Stimulate your creativity at Montorno and the rustic, restored centuries-old house belonging to the Poli family for generations. Montorno is surrounded by spectacular views of marble quarries, chestnut forests, terraced vineyards, olive groves, and lush valleys leading to the Mediterranean Sea. And enjoy exquisite lunches and dinners, specially prepared by our chef during each day of the workshop's sessions.

The picturesque village of Seravezza is nestled in a valley in the Apuane Alps in north-western Tuscany, only a few miles from the Mediterranean Sea. Seravezza is home to a Medici summer palace dating from the mid-1500s, which now houses a museum featuring exhibits documenting the rich history of extraction and workmanship of the area's marble—some known to be used by the master Michelangelo himself.

In Seravezza, students will become acquainted with the delights of small-town Italy, and can enjoy an espresso, or glass of wine or beer with the local residents in one of the many cafés. Each Monday, the open air market attracts shoppers from neighboring towns in search of fresh produce, meat and cheese, clothing and various other items.

Painting: Ellen Zelano

1) arrive May 30 — depart June 12

Painting & Bas Relief: Danni Dawson & Mike Francis

2) arrive June 20 — depart July 3

Contemporary Painting & Drawing: Judy Southerland & Genoveva Fernandez

3) arrive Aug 1 — depart Aug 14

Painting: Kurt Schwarz

4) arrive Aug 19 — depart Sept 1

Workshop fee: \$3200 USD

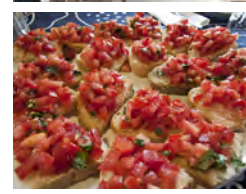
We need a minimum commitment of 6 students per class by **February 28** (\$600 deposit required) to keep the class in our schedule. Any class without the minimum will be cancelled at that time and deposits for cancelled sessions will be refunded.

Montorno 2010, 412 S. Adams St., Arlington, VA 22204

703-521-0595

Email: info@montorno.com

www.montorno.com



montorno

Planned day trips: During each workshop, plan on a sightseeing trip to Pisa, the walled city of Lucca, or the five picturesque seaside villages of Cinque Terre. Students will explore the marble quarries of Carrara, and visit sculpting and mosaic studios in the internationally renowned artists' community in the nearby town of Pietrasanta. Also enjoy an opportunity to shop at one of the region's largest weekly markets, either in nearby Pietrasanta or the popular Mediterranean resort town of Forte dei Marmi.

Transportation & accommodations: In Seravezza and neighboring towns, students will be housed in double-occupancy accommodations with a shared bath, unless otherwise and previously specified. Ground transportation will be provided between students' lodgings and the Pisa airport or Viareggio train station on the arrival and departure dates. Transportation will also be provided between lodgings and the Montorno studio on all class days, as well as on the several scheduled field trips.

In addition to the above (but not included in the workshop package), students are free to relax in their accommodations, or to go exploring on free days: visit a medieval castle; experience the Tuscan "Wine Road" to visit wineries in the region where Chianti and Brunello are produced; go to the nearby beach; play golf; or visit other Italian cities known for their history, churches, and museums (Florence, Siena, Assisi, San Gimignano). Even Rome and Venice are only a few hours away by train.

Included: Round-trip ground transportation between Pisa airport or Viareggio train station and Montorno; 13 nights accommodations (double occupancy); one change of towels and sheets per week; daily breakfast (in accommodation); 9 dinners; 8 lunches; 8 full days of painting, drawing, or sculpting instruction (model fees and use of an easel are included); daily group transportation to and from workshops; group transportation for scheduled day trips, per workshop class.

Not included: Airfare. Insurance. Painting, drawing, and sculpture materials (stretcher bars, solvents, and sculpting clay may be purchased upon arrival); lunch and dinner during day trip; lunch and dinner on "free" days; phone calls; or personal items.

Workshop fee: \$3200 USD

We need a minimum commitment of 6 students per class by **February 28** (\$600 deposit required) to keep the class in our schedule. Any class without the minimum will be cancelled at that time and deposits for cancelled sessions will be refunded.

We can accommodate a maximum of 12 students per workshop. A limited number of single-occupancy accommodations are available for an additional fee of \$450 (USD), due at the time of deposit. A companion fee of \$2700 does not include drawing or painting instruction. Deposit is non-refundable after February 28.

Sign up early to ensure the workshop dates of your preference!

Montorno 2010, 412 S. Adams St., Arlington, VA 22204

703-521-0595

Email: info@montorno.com

www.montorno.com

